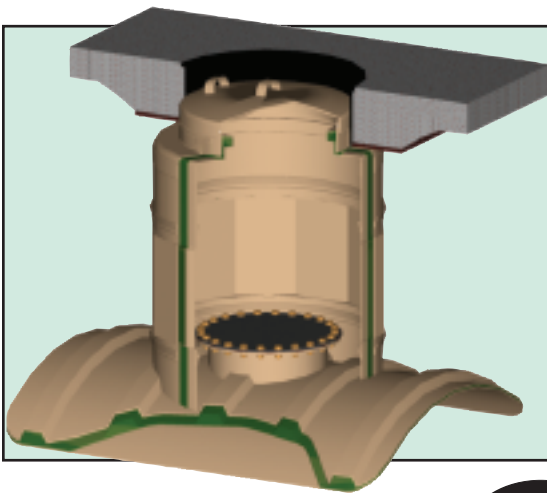
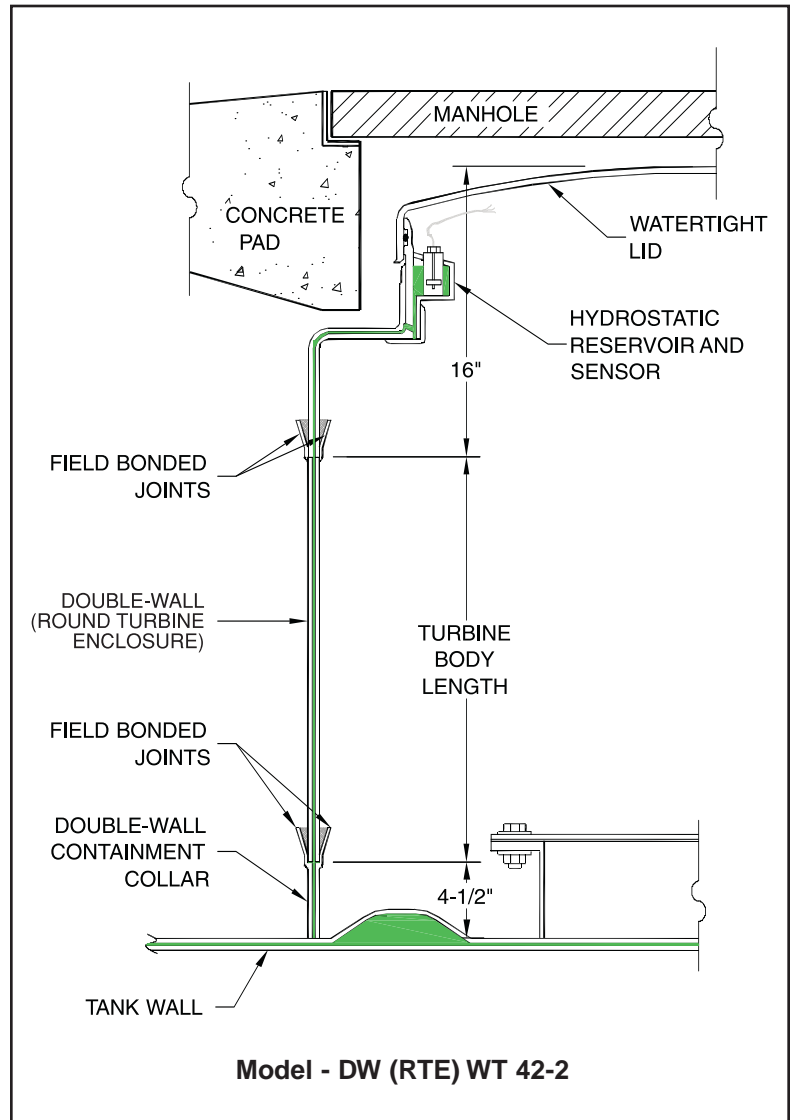


*Hydrostatically  
Monitored . . .*

# DOUBLE-WALL TURBINE ENCLOSURE

Today, more stringent regulations are focusing on the long-term performance of **the entire UST System** - including tank sumps.

Containment Solutions, Inc. has built its reputation on the simplicity and reliability of the double-wall hydrostatic tank monitor. CSI continues that tradition by offering customers a UL-Listed **double-wall turbine enclosure system, which is hydrostatically monitored** from the tank top to the turbine lid.



## FEATURES AND BENEFITS

- Continuous monitoring of the enclosure, collar, penetrations and joints
- Pressure or vacuum testable prior to brine filling
- Easy access float sensor for annual inspections
- 30-year structural and corrosion warranty
- Available in all sizes and models
- Available on new and existing tanks



CONTAINMENT SOLUTIONS, INC. • 5150 Jefferson Chemical Rd • Conroe, TX 77301-6834  
Toll Free (877) CSI-TANK or (936) 756-7731 • Fax (936) 756-7766



[www.containmentsolutions.com](http://www.containmentsolutions.com)

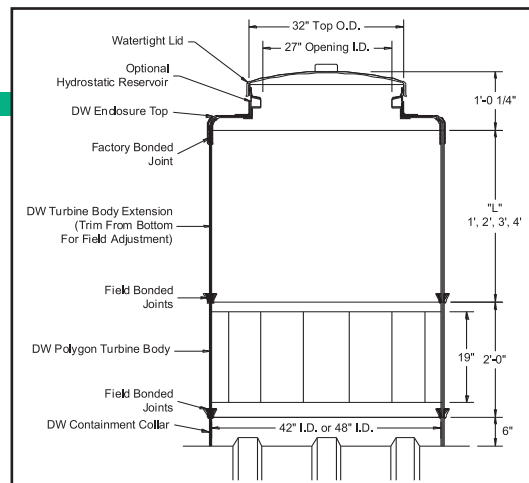
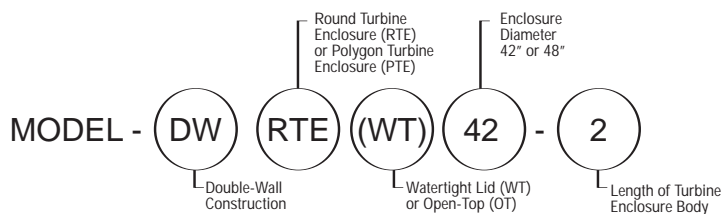


# CSI Offers 42" and 48" diameter Turbine Enclosures in round (RTE) and polygon (PTE) shapes . . .

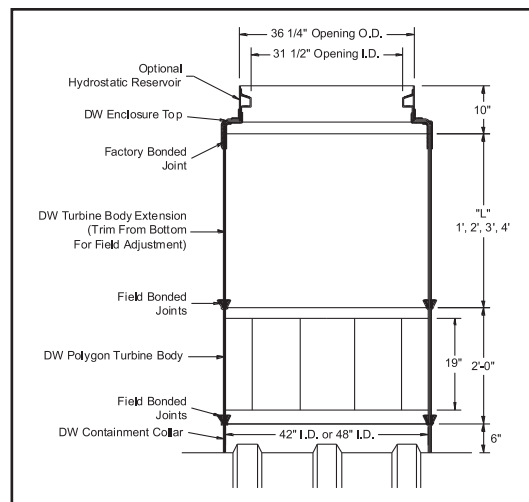
**Watertight Lids (WT)** are typically used at the submersible end of the tank when access is infrequent and the area must be water and vapor tight. This 32" OD lid is made of rigid FRP and is locked into place by simply standing on the lid. CSI does not use metal parts that may corrode and weaken over time.

**Open-Top (OT)** models are available at the fill-end of the tank when multi-port street boxes are used. CSI offers various size openings and configurations to accommodate the most popular street boxes. Please specify your specific model at time of order entry.

## PRODUCT DESCRIPTION EXAMPLE:



**Watertight Lid Model**



**Open-Top Model**

## DOUBLE-WALL TURBINE ENCLOSURE MODELS

| MODEL                  | ROUND (RTE)      |                  | LENGTH |
|------------------------|------------------|------------------|--------|
|                        | Watertight (WT)  | Open-Top (OT)    | (L)    |
| <b>42" Dia. Models</b> | DW RTE (WT) 42-2 | DW RTE (OT) 42-2 | 2'     |
|                        | DW RTE (WT) 42-3 | DW RTE (OT) 42-3 | 3'     |
|                        | DW RTE (WT) 42-4 | DW RTE (OT) 42-4 | 4'     |
|                        | DW RTE (WT) 42-5 | DW RTE (OT) 42-5 | 5'     |
|                        | DW RTE (WT) 42-6 | DW RTE (OT) 42-6 | 6'     |
| <b>48" Dia. Models</b> | DW RTE (WT) 48-2 | DW RTE (OT) 48-2 | 2'     |
|                        | DW RTE (WT) 48-3 | DW RTE (OT) 48-3 | 3'     |
|                        | DW RTE (WT) 48-4 | DW RTE (OT) 48-4 | 4'     |
|                        | DW RTE (WT) 48-5 | DW RTE (OT) 48-5 | 5'     |
|                        | DW RTE (WT) 48-6 | DW RTE (OT) 48-6 | 6'     |

| POLYGON (PTE)    |                  | LENGTH |
|------------------|------------------|--------|
| Watertight (WT)  | Open-Top (OT)    | (L)    |
| DW PTE (WT) 42-2 | DW PTE (OT) 42-2 | 0'     |
| DW PTE (WT) 42-3 | DW PTE (OT) 42-3 | 1'     |
| DW PTE (WT) 42-4 | DW PTE (OT) 42-4 | 2'     |
| DW PTE (WT) 42-5 | DW PTE (OT) 42-5 | 3'     |
| DW PTE (WT) 42-6 | DW PTE (OT) 42-6 | 4'     |
| DW PTE (WT) 48-2 | DW PTE (OT) 48-2 | 0'     |
| DW PTE (WT) 48-3 | DW PTE (OT) 48-3 | 1'     |
| DW PTE (WT) 48-4 | DW PTE (OT) 48-4 | 2'     |
| DW PTE (WT) 48-5 | DW PTE (OT) 48-5 | 3'     |
| DW PTE (WT) 48-6 | DW PTE (OT) 48-6 | 4'     |